

# Art Competition WINNERS



## HIGHLIGHTS

Competition Results!

Lighthouses

Lady Margaret Casson

Meet: Dr Ellen McAdam &  
Andrea Hegedus



**the CHaT magazine**

AUGUST 2020



CHANCE  
HERITAGE  
TRUST

## Chance Heritage Trust

[www.chanceht.org](http://www.chanceht.org)

CBS Registered No: 8180

### Ambassadors

Sir Sebastian Chance

Toby Chance

David Encill

### Directors

Mark Davies (Chairman)

Henry Chance (Vice-Chairman)

Kieran Dyde

Tonia Flanagan

Tom Haydon

Olivia Hewkin

Joshua Lowe

Dr Ellen McAdam

Marianne Monro

John Montague

John Pye

Madelene Schofield-Whittingham

## the CHaT magazine

... is a free and occasional publication aimed primarily at subscribers of the Chance Heritage Trust (CHT). Your contributions are welcome: please send articles, letters, thoughts, anecdotes to [editor@chanceht.org](mailto:editor@chanceht.org)

Photos are especially helpful! Please ensure these are photoed or scanned at high resolution for optimum result.

Photos are best sent as JPG or PNG, and without cropping if possible.

Editor: David Encill

e: [editor@chanceht.org](mailto:editor@chanceht.org)

All information is correct at time of publishing, E&OE. Copyrights are respected wherever possible.

Chance Heritage Trust

Find us on: Facebook, Twitter, YouTube, Pinterest & Instagram.



### Front Cover:

The five winning entries for the Art Competition.

## Editorial CHaT

Welcome to the fifth edition of the CHaT magazine. The operation to produce the magazine has been refined and the end-result is somewhat improved, but if you have any suggestions we are always willing to listen.

Following on from this edition's feature on Lady Margaret Casson, who produced two of the most collectable patterns for Chance Brothers, the next issue will feature the work of another eminent designer, Robert Goodden.

*David Encill*

## SPOTLIGHT ON THE DIRECTORS: Dr Ellen McAdam

After a first degree in archaeology at the University of Edinburgh in 1974 Ellen McAdam completed a DPhil in 1982 on ancient Mesopotamian archaeology at Somerville College, Oxford, where she was Katherine and Leonard Woolley Junior Research Fellow. From 1977 to 1988 she worked on excavations in Jordan, Syria and Iraq and carried out research in museums in Iraq, the UK, Europe and the USA, including two years as Research Fellow of the British School of Archaeology in Iraq. She has published on British and Near Eastern archaeology and held honorary research positions at Glasgow, Birmingham and UCL.

From 1988 she worked for the Manchester and Oxford archaeological units and English Heritage, joining the Museum of London in 1998. In 2001 she moved to Glasgow Museums, working on major capital projects including Kelvingrove, Glasgow Museums Resource Centre, the Riverside Museum and Kelvinhall, raising funds for collections research and community engagement projects, and developing international touring. From 2009 she was Head of Glasgow Museums. In 2013 she became Director of Birmingham Museum Trust, negotiating new contractual arrangements with BCC and initiating programmes of international touring and community engagement, including the award-winning Collecting Birmingham. In 2015 she founded the English Civic Museums Network.

Dr McAdam retired in 2020. She is a trustee or volunteer for charities including the Birmingham and Warwickshire Archaeological Society, the Henry Barber Trust, the Chance Heritage Trust and the British Institute for the Study of Iraq. She is working on a corpus of prehistoric Mesopotamian figurines.





## LIGHTHOUSE COMPETITION: RESULTS



Our first Lighthouse Art Competition was a resounding success, with dozens of superb entries from around the world.

The competition was open for all age groups and any medium of art was permissible, from painting to drawing; poetry to music, with a prize of £25 gift tokens to the winners. A big thank you to everyone who participated.

### And the winners are ...

**Under 5 : Ava Morris** – Manchester, England

**5-10 : (with help): Ben Cameron** – Kilchoan, Ardnamurchan, Scotland

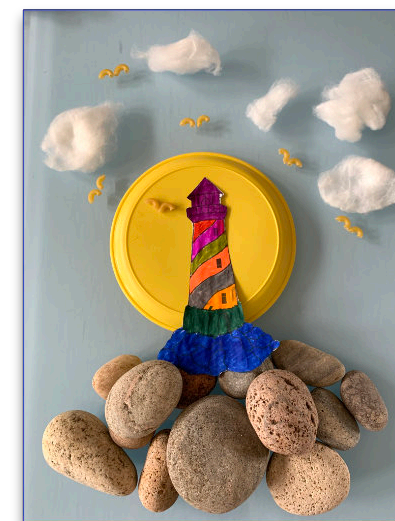
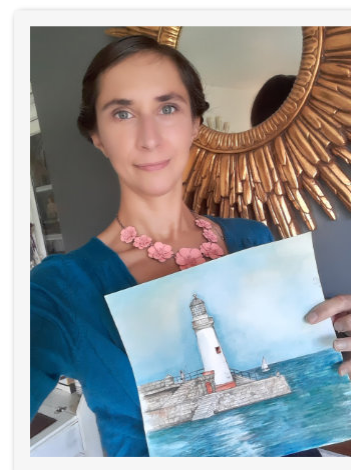
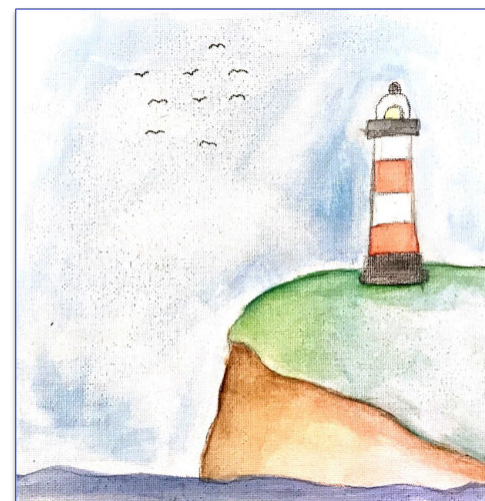
**5-10 (independent) : Eve Topliss** – Sheffield, England

**11-16 : Zaina Alam Piya** – Dhaka, Bangladesh

**Over 16 : Clare Griffiths** – Newcastle-under-Lyme, England

### Overall Winner:

**Eve Topliss, aged 10 (right)**



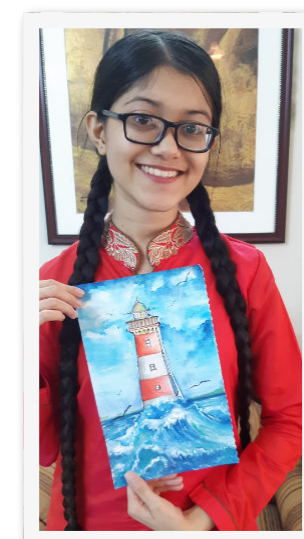
*Top left: Ava Morris, aged 2 (nearly 3)*

*Top right: Ben Cameron's montage – we just loved the pasta seagulls!*

*Middle: Eve Topliss' overall winning entry*

*Bottom left: Clare Griffiths*

*Bottom right: Zaina Alam Piya, Bangladesh*



## LIGHTHOUSES

### Irish Lighthouses

Following on from our own Lighthouse Competition, our intrepid correspondent, Brendan Jackson, discovered this Irish site that had a competition in a similar vein. Click this link for more details:

<https://www.fightingwords.ie/news/storykeeper>

### The Leaning Tower of Shinnecock

A strange photo came to light (pardon the pun) while trawling the internet. It appears to show a lighthouse leaning over at an impossible angle. So did it fall, or was it pushed?

The lighthouse was called Shinnecock and was situated on Long Island, New York, in the USA. It was an impressive 168ft (51m) tall with a 1st Order Fresnel lens located in the Tower.

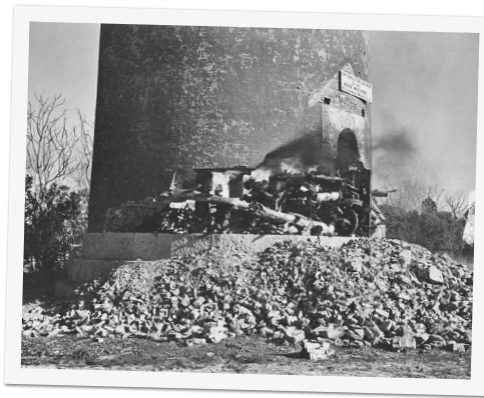
However, in 1948 the Shinnecock lighthouse needed to be demolished after the tower became unstable.

The demolition was achieved by removing bricks from one side of the base and replacing them with wooden blocks. The wood was then lit and after a while the blocks would collapse with the lighthouse falling to the designated side.

Cue one very patient and alert photographer!

### Last Minute News

It is International Lighthouse Heritage Weekend on 22<sup>nd</sup> to 23<sup>rd</sup> August 2020. See the [ALK website](#) for more details.

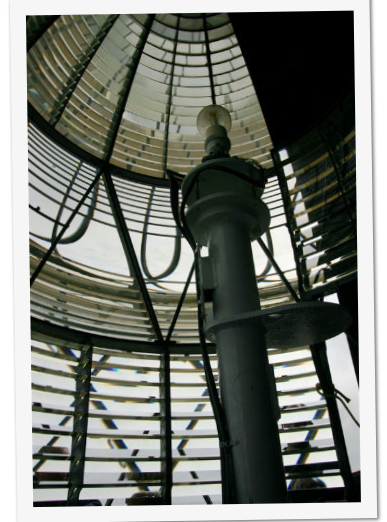


### Happisburgh Lighthouse

Found on the Norfolk coast, Happisburgh is the oldest lighthouse in East Anglia and was originally constructed in 1790. In 1867, a First Order catadioptric lens designed by James Timmins Chance was installed.

In 1987, Trinity House declared the lighthouse redundant, and so a petition made by the villagers allowed them to set up an organisation and it then became the only independently operated lighthouse in the whole of the UK

The Happisburgh Lighthouse Association also have Princess Anne as its Patron.



### Our New Social Media Manager

A hearty welcome to Andrea Hegedus who is already making her presence known as our new volunteer Social Media Manager.

Andrea started volunteering for the Trust in March 2020. She has over 15 years of experience in marketing and currently works as a Marketing Executive in the automotive/ engineering industry.

Originally from Romania, Andrea moved to Birmingham seven years ago and is fascinated by the region's industrial heritage. She spotted the Chance Glassworks building from the towpath on her commute. Curious to find out more, she googled Chance Glassworks later that day and saw the opening for a Marketing Volunteer. She is excited by this opportunity to help the regeneration project and also to develop her experience.

Andrea comments, "I am from Transylvania, which people find surprisingly interesting. I've had my fair share of vampire jokes :)"





## LADY MARGARET CASSON

Lady Margaret Casson (1913–1999) was married to Sir Hugh Casson, the architect for the Festival of Britain in 1951. She was commissioned by Chance Brothers to produce two tableware patterns; Night Sky in 1957 and Green Leaves in 1958.

### Night Sky, 1957

Undoubtedly designed with the trend towards the "Atomic" patterns of the late-1950s and coincidentally it appeared in the same year that Russia's Sputnik was launched.

Night Sky was probably another attempt to cash in on the hugely successful avant-garde "Swirl" pattern that was introduced two years earlier. Night Sky was promoted through all the usual trade magazines and endured for about two years.

Examples can be found (from all good charity shops) even though it is a scarce pattern. The items to look out for are the Giraffe carafe and the tumblers that are featured in the advert below. Note the company name is given as W E Chance & Co. Ltd – more on that little oddity in a later issue.



*Chance* announce  
a  
new star  
in the  
**NIGHT  
SKY**

Enthusiastically received at the Blackpool Fair, this exciting contemporary glassware is now available for retailers. Of particular interest are the new Giraffe jug, and 3-place tray, also the new Intaglio cut Ruby and Blue glass range. We would very much like the pleasure of seeing you at our exhibition to be held at our London Showroom, 29 St James's Street, SW1 (Fourth Floor, rear suite) for one week commencing May 27th, daily 9.30-5.30.

W.E. Chance & Co Ltd, Glassworks, Smethwick 40, Birmingham  
London Office: 29/30 St James's Street, London, SW1

## Green Leaves, 1958

One of Chances most endearing patterns of its slumped glassware range is Green Leaves. Despite its contemporary look, it was actually designed in 1958.

It is probably because of this that examples are highly sought after by collectors as, conversely, the pattern did not appear to have been very popular with the buying public at the time. However, a more technical reason for it only being made available for about two years could have been the availability of the opal-flashed glass it used.

It is believed that there are at least thirteen patterns, each depicting the leaf of a tree or a shrub. The designs for each of the tumblers is not known, apart from the two examples featured here.

Examples of Green Leaves can all be classified as scarce with the occasional one, like the tumblers, bordering on being "rare".



Top: A photo of a tumbler (© Graham Rae) with a press cutting from 1958 showing a different design (Pottery Gazette)

Left: Close-up of the 5-in. Diameter pin dish with Oak leaves



Right:

Three-segment hors d'oeuvres tray, 13-in (33cm) in length, which was accompanied by three separate trays. Each was decorated with Maple leaves (top)

7½-in. (19cm) Bowl with the Arum leaves (left)

6½-in. (16.5cm) Dish with Ivy leaves (right)



## URGENT: Your Help Will Help!

The **Smethwick Town Investment Plan** was discussed at the last Board meeting. It is being developed at a fairly rapid pace and if we are not careful the Chance Glassworks could be left out. We have been invited to submit an application and we are working on that now.

The four priorities for Smethwick are currently:

1. Maximise local impact of major investments in hospital and Aquatics Centre
2. Deliver more housing
3. Regenerate and upgrade local assets
4. Support good quality jobs

Whilst Priority 3 *Regenerate and upgrade local assets* covers our project, it is a pity that Heritage Regeneration isn't specifically mentioned. There is still time to express views on the above themes and to comment via the survey here <http://www.sandwell.gov.uk/townsfund> I would urge everyone to complete the survey, particularly those living in the vicinity. **The deadline is 25th August**

Or you can use this link to enter the survey directly:

<https://wh1.snapsurveys.com/s.asp?k=159653462059>

Click 'Yes' to 'Q2' and enter your suggestions in the box below

### More information here:

These links take you to the Government website and relate to Smethwick

<https://mytown.communities.gov.uk/town/smethwick/>

This link relates to protecting Heritage:

<https://mytown.communities.gov.uk/protect-our-heritage/>

**Town Priorities: Smethwick**

Q1 Do you support the four priorities for your town?  
☒ Yes  
☐ No

Q2 Are there any additional priorities that you think should be included?  
☒ Yes  
☐ No

If yes, please provide further details

## NEWS

### New Optimism for the Black Country



The Black Country has finally been designated a UNESCO Global Geopark after 10 years hard work, which should bring new hope and optimism to the area.

Click [this link](#) for more details.

### New Funding for the Trust

We are delighted to announce that Chance Heritage Trust has been awarded a grant from the Heritage Emergency Fund.

A big thank you to the National Lottery Heritage Fund who, due to their speed in responding to the COVID crisis, have given us and others organisations the much need funding to continue with our critical work. A big thank you too to National Lottery players for making it possible.



### Gift Aid Declaration

Did you know that by not declaring yourself as a UK taxpayer, the Trust loses out on 25% of your contribution?

This applies to any registered charity, so registering yourself as someone who donates to charities helps greatly.

This form can be downloaded from our website here:

**CHANCE HERITAGE TRUST**  
 Charity Gift Aid Declaration

Gift Aid is reclaimed by the charity from the tax you pay for the current year. Your address is needed to identify you as a current UK tax payer.

In order to Gift Aid your donation you must tick the box below:

☐ I want to Gift Aid my donation of £\_\_\_\_\_ and any donations I make in the future or have made in the past 4 years to:

Name of Charity: Chance Heritage Trust

I am a UK taxpayer and understand that if I pay less Income Tax and/or Capital Gains Tax than the amount of Gift Aid claimed on all my donations in that tax year it is my responsibility to pay any difference.

**My Details**

Title: \_\_\_\_\_ First Name or Initial(s): \_\_\_\_\_

Surname: \_\_\_\_\_

Full Home Address: \_\_\_\_\_

Post Code: \_\_\_\_\_ Date: \_\_\_\_\_

Please notify the charity if you:

- Want to cancel this declaration
- Change your name or home address
- No longer pay sufficient tax on your income and/or capital gains

If you pay Income Tax at the higher or additional rate and want to receive the additional tax relief due to you, you must include all your Gift Aid donations on your Self-Assessment tax return or ask HM Revenue and Customs to adjust your tax code.

Chance Heritage Trust is a community benefit society registered by the Financial Conduct Authority - Registered Number R500180. Registered Office: Green House, Corbly Street Court, Sheep Fold Road, Halesowen, West Midlands, B62 9BP.

# UPDATES

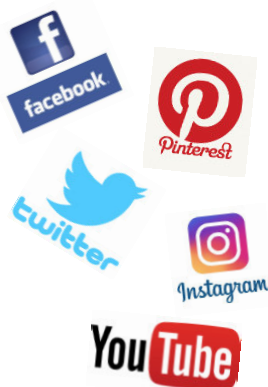
## Social Media

Plenty of new activity on our Facebook page!  
However, we now have our own forum if you would prefer to use this ...

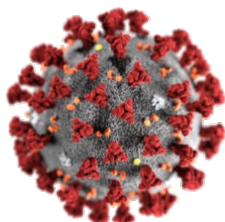
## New Chance Forum

Go to our website at [www.chanceht.org/forum](http://www.chanceht.org/forum) and browse the topics.

Anyone can join and we look forward to meeting you there! Contact [info@chanceht.org](mailto:info@chanceht.org) for more details.



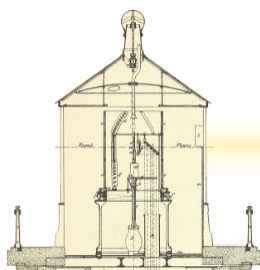
## Coronavirus Update



Sadly, the Powerpoint presentation of *A Brief History of Chance Brothers* scheduled on the 5<sup>th</sup> November for the Friends of Dudley Archive, has now been **cancelled**.

We are hoping that 2021 will give us more freedom to spread the 'Chance' word a little further!

In a joint initiative with [Smethwick Heritage Centre](http://www.smethwickheritagecentre.co.uk), every available issue of *Chance Comments* is now available to view online! Go to [www.chancecomments.co.uk](http://www.chancecomments.co.uk) for more details.



Do you have an interesting lighthouse story? Mail me at [editor@chanceht.org](mailto:editor@chanceht.org).

## the CHaT magazine

a free and occasional publication



CHANCE  
HERITAGE  
TRUST